

AGENDA SUPPLEMENT (1)

Meeting: Eastern Area Planning Committee

Place: [Online Meeting](#)

Date: Thursday 15 October 2020

Time: 3.00 pm

The Agenda for the above meeting was published on 7 October 2020. Additional documents are now available and are attached to this Agenda Supplement.

Please direct any enquiries on this Agenda to Tara Shannon, of Democratic Services, County Hall, Bythesea Road, Trowbridge, direct line 01225 718352 or email tara.shannon@wiltshire.gov.uk

Press enquiries to Communications on direct lines (01225)713114/713115.

This Agenda and all the documents referred to within it are available on the Council's website at www.wiltshire.gov.uk

7 **Planning Applications (Pages 3 - 14)**

Presentation Slides.

DATE OF PUBLICATION: 12 October 2020

This page is intentionally left blank

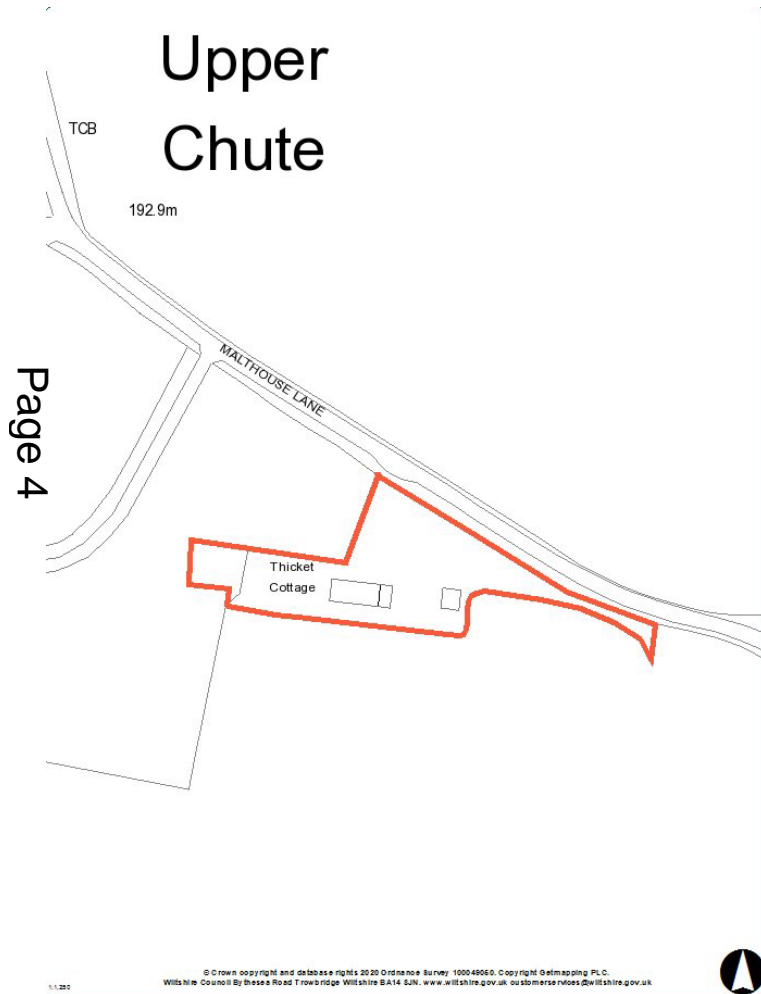
Eastern Area Planning Committee

15th October 2020

7a) 20/05329/VAR Thicket Cottage, Malthouse Lane, Upper Chute, SP11 9EG

Variation of conditions 2 and 5 of 20/01143/FUL to include the extension of the ground floor by 8m, and the formation of a rooftop terrace with external staircase

Recommendation: Approve with Conditions

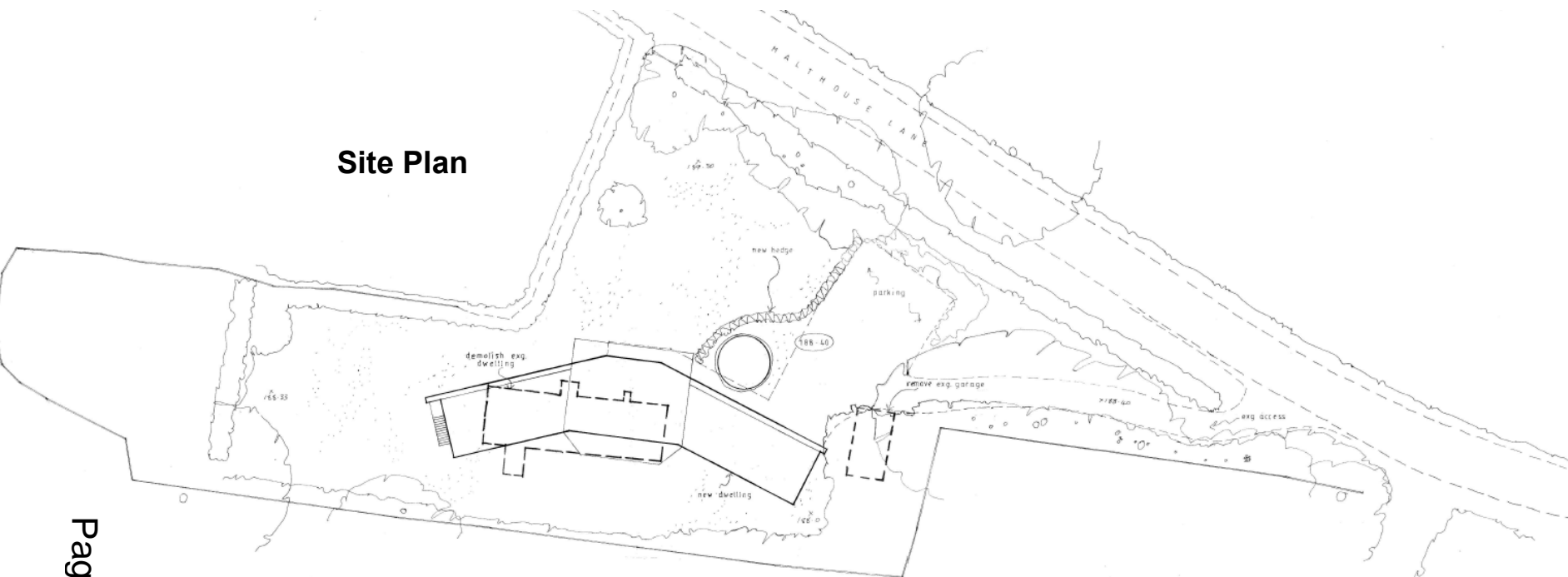


Site Location Plan



Aerial Photography

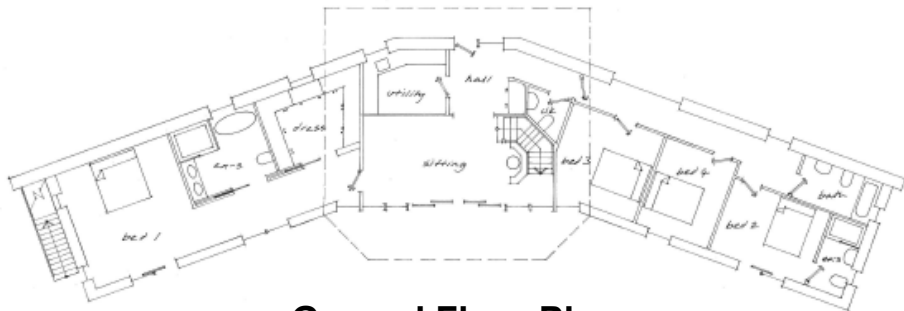
Site Plan



Page 5



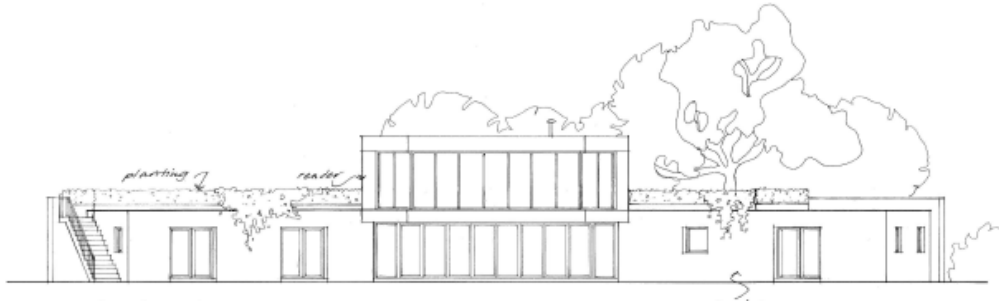
188-40 new ground levels
187-50 exp. ground levels



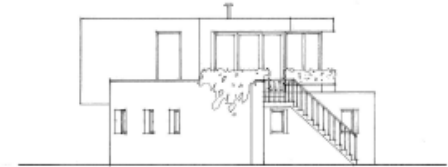
Ground Floor Plan



First Floor Plan

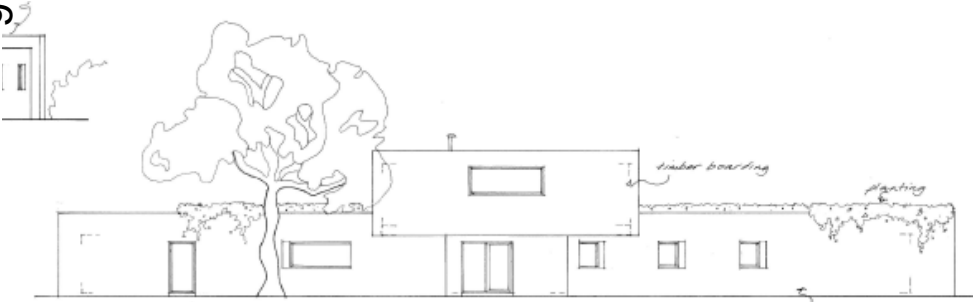


South Elevation

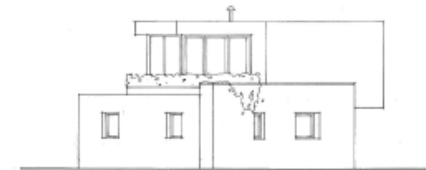


West Elevation

Page 6

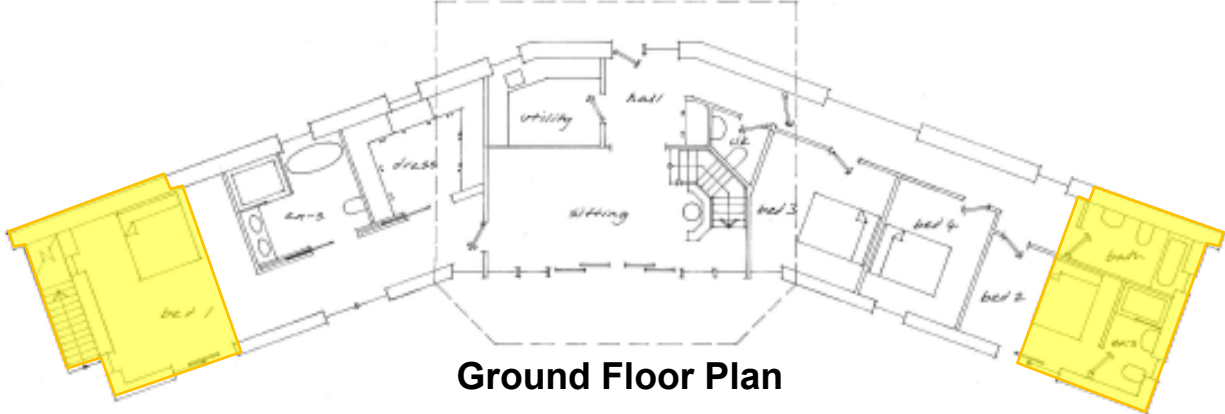


North Elevation

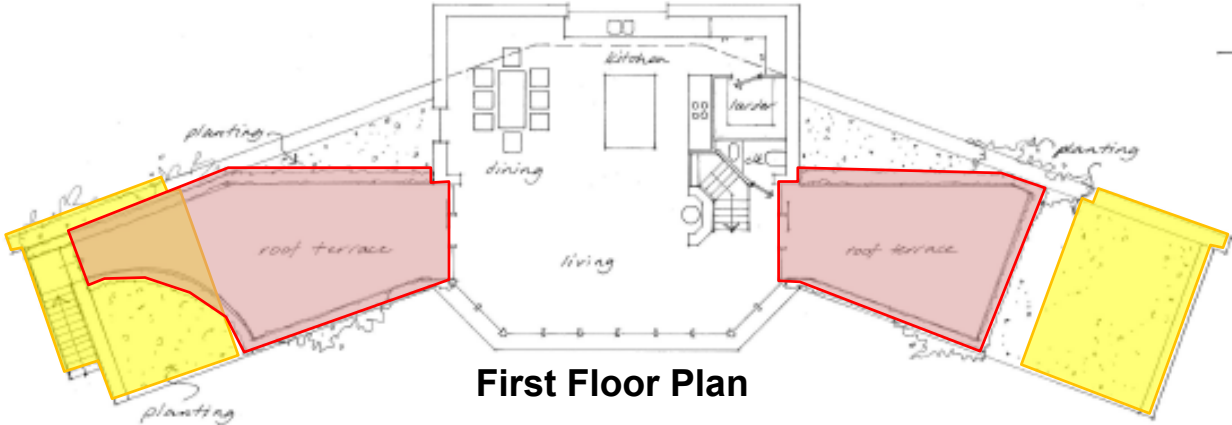


East Elevation

Comparison with approved scheme 20/01143/FUL



Ground Floor Plan

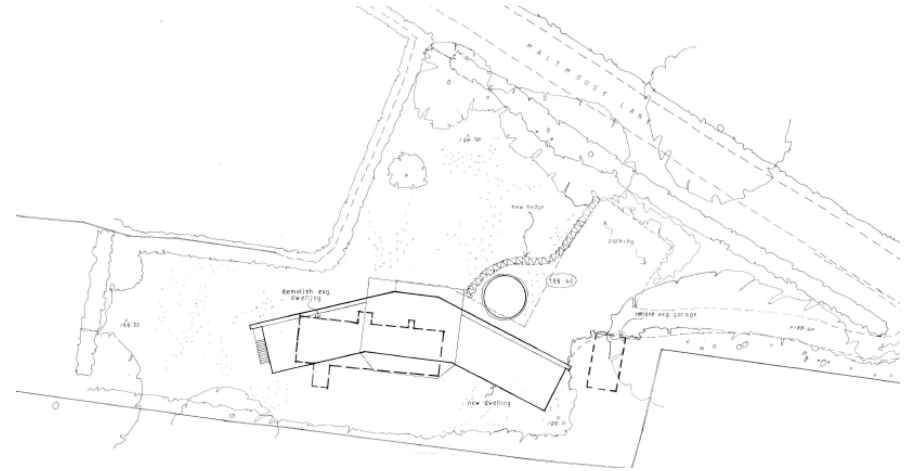
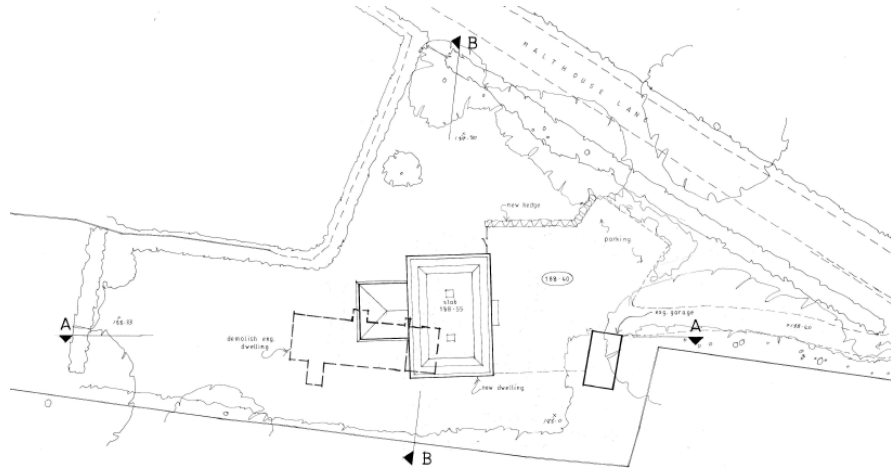


First Floor Plan



North Elevation

Comparison with approved (at appeal) scheme 19/06565/FUL



Page 8



SOUTH ELEVATION



NORTH ELEVATION

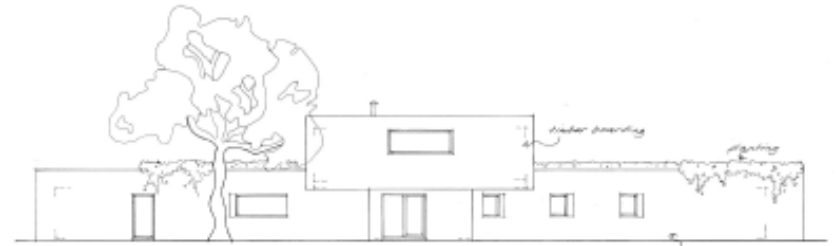


EAST ELEVATION

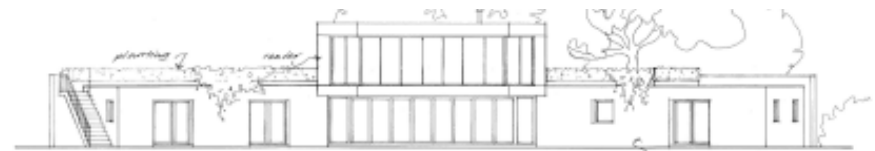


WEST ELEVATION

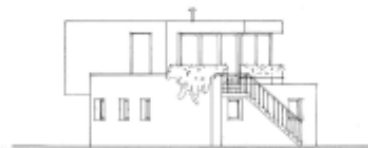
19/06565/FUL



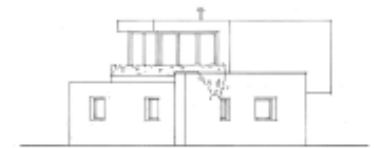
north elevation



south elevation

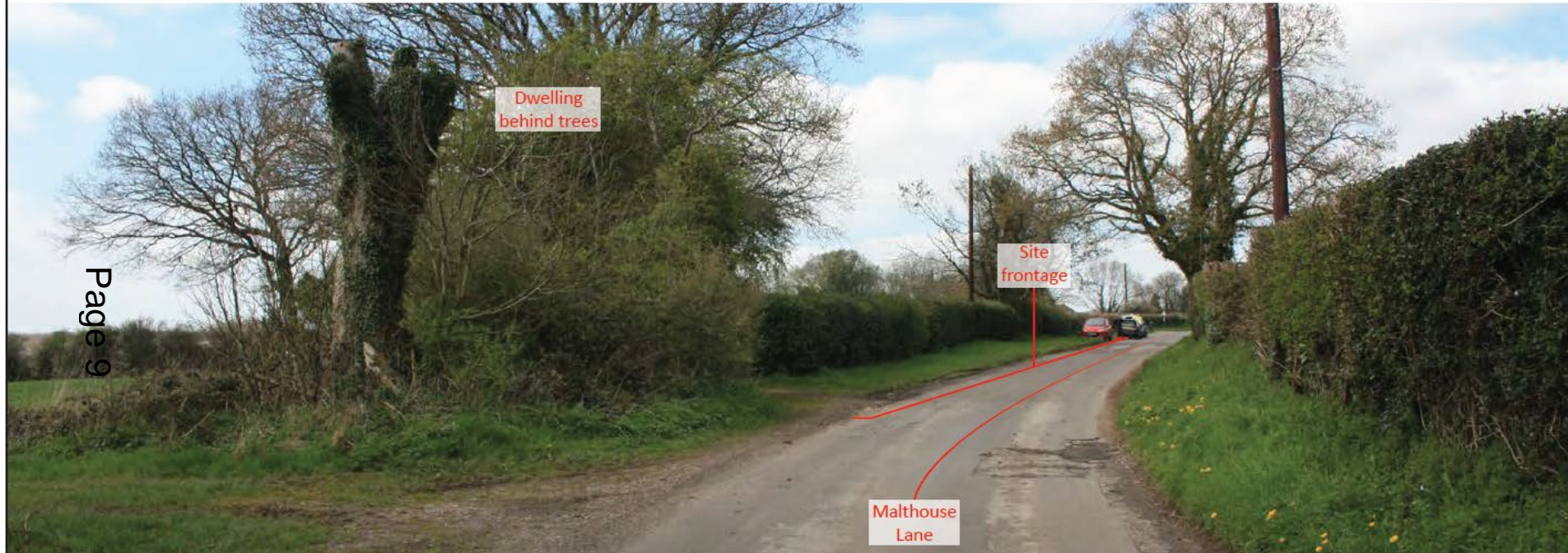


west elevation



east elevation

20/05329/VAR



VP: 2	Viewpoint direction: West	Approximate distance from site: 50m
Taken by: WH	Photograph date: April 2019	OS map elevation: Between 185-190m AOD



VP: 10

Viewpoint direction: South-east

Approximate distance from site: 80m

Taken by: WH

Photograph date: December 2019

OS map elevation: Between 185-190m AOD



VP: 8

Viewpoint direction: North-west

Approximate distance from site: 1.04km

Taken by: WH

Photograph date: April 2019

OS map elevation: 145m AOD



VP: 6

Viewpoint direction: North-east

Approximate distance from site: 505m

Taken by: WH

Photograph date: April 2019

OS map elevation: Between 175-180m AOD



VP: 9	Viewpoint direction: South-west	Approximate distance from site: 515m
Taken by: WH	Photograph date: April 2019	OS map elevation: Between 200-205m AOD

Eastern Area Planning Committee

15th October 2020